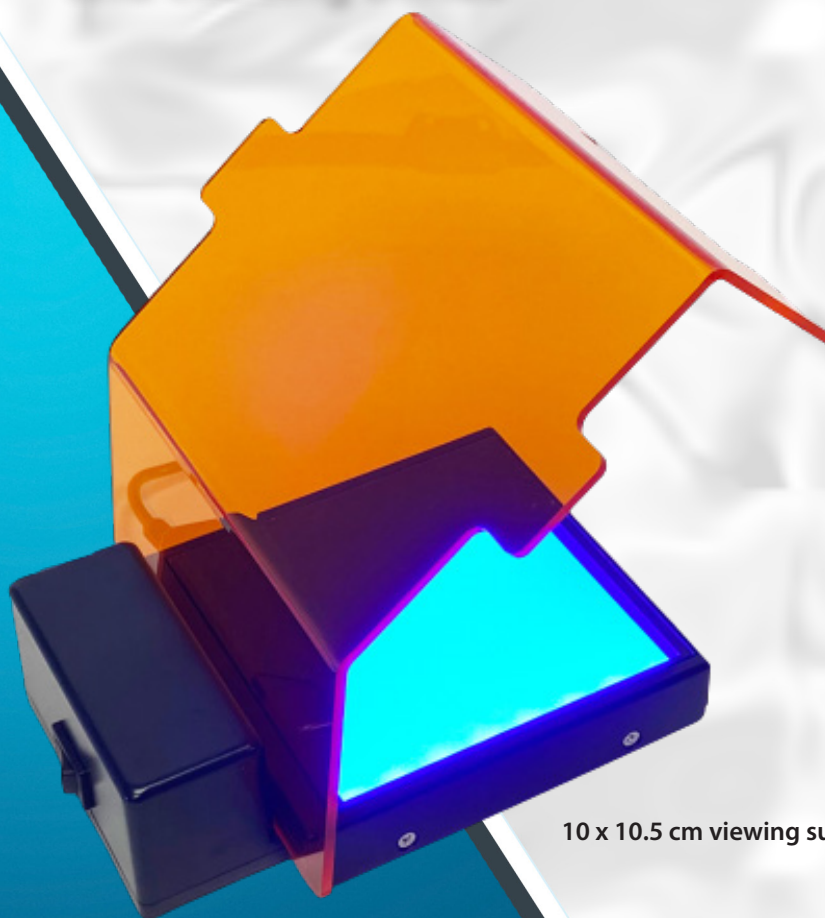


## Make the move to *Blue*

### ...the smart alternative to UV

- Safe blue light for gel viewing
  - Does not damage DNA
  - Safe for users
- Bright and uniformly lit viewing surface
- Compatible with SmartGlow™ and SYBR® type stains
- Dual position filter cover for gel viewing and excising bands



10 x 10.5 cm viewing surface

## Safer for samples and safer for you

Visible blue wavelength at 465nm is not damaging to DNA, so DNA bands can be cut out and used for further experiments. Downstream cloning efficiency is very high due to minimal DNA degradation. The blue light is non-hazardous to eyes or skin.

## Two position filter cover

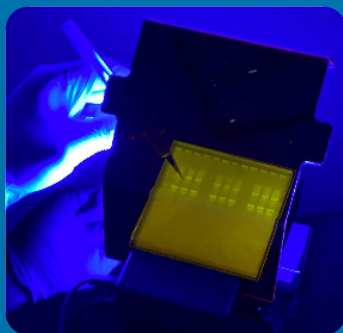
The *SmartBlue Mini* requires no special safety shielding, but blue light needs to be filtered for dye visualization. The detachable, dual-position amber cover filters out the blue light, allowing stained DNA bands to be seen clearly. The cover can also be placed at a 60° angle for band excision or in the horizontal position for general viewing.

## Bright fluorescent bands

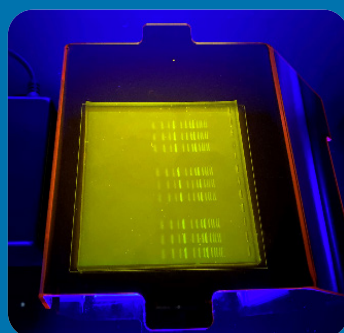
The *SmartBlue Mini* incorporates powerful LEDs with a diffuser and filter to provide optimal excitation of green fluorescent dyes. Light penetrating the gel from below provides a high level of sensitivity to detect small quantities of DNA.

## Long lasting LED technology

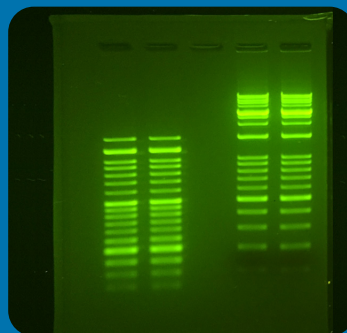
An array of super bright LEDs with a 30,000 hour service life provide the light source for the *SmartBlue Mini*. To save energy, the power switch includes an automatic 5-minute shutoff. A scratch proof cover glass protects the lighted surface, allowing gels to be cut with a metal blade. The *SmartBlue Mini* Transilluminator is covered by a 2 year warranty.



Amber cover raised for excision of bands



Amber cover lowered for optimal gel viewing



Markers stained with SmartGlow™



Optional amber viewing glasses

## Specifications

Light source	High intensity LEDs	Output wavelength	Peak at 465nm
Filter cover	Amber, for filtering of blue light	Viewing surface	3.9x4.1 in/10x10.5 cm
Exterior dimensions	6.7x4.7x1.9 in/17x12x5 cm	Weight	0.2 kg/0.5 lb
Electrical	100-240V, 50/60Hz	Warranty	2 years

## Ordering Information

E4100	<i>SmartBlue Mini</i> Transilluminator, includes amber filter cover, 120V
E4100-E	<i>SmartBlue Mini</i> Transilluminator, includes amber filter cover, 240V
E4000-VG1	<i>SmartBlue</i> Viewing Glasses
E4500-PS	<i>SmartGlow</i> Pre-stain for nucleic acid gels
E4500-LD	<i>SmartGlow</i> Loading dye with stain for nucleic acid gels



A Division of Benchmark Scientific Inc.  
Phone 908 769-5555 Fax 732 313-7007  
Email [info@accuris-usa.com](mailto:info@accuris-usa.com)  
Visit us at [www.accuris-usa.com](http://www.accuris-usa.com)